



South Terrace, Littlehampton, BN17 5LE - £140,000

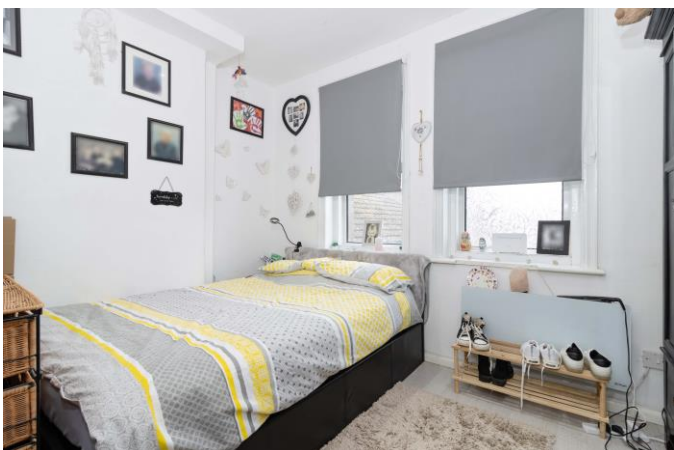
Aspire Residential is delighted to offer to the market this one bedroom flat located on Littlehampton's desirable seafront. The modern property comprises of one double bedroom, an open plan kitchen/living room, bathroom, W/C and sea views. Benefits include being close to sea front, local parks and shops. Call today to book your viewing on 01903 259961.

Key Features:

- **Being sold with no onward chain**
- **Ideal for a first time buyer or as a buy to let investment**
- **Set along Littlehampton seafront with delightful sea views**
- **Convenient location close to shops and amenities**
- **Well presented accommodation**
- **EPC Rating - D**

www.aspireresidential.co.uk

28 Goring Road , Worthing, BN12 4AD
01903 259961 info@aspireresidential.co.uk



Hallway

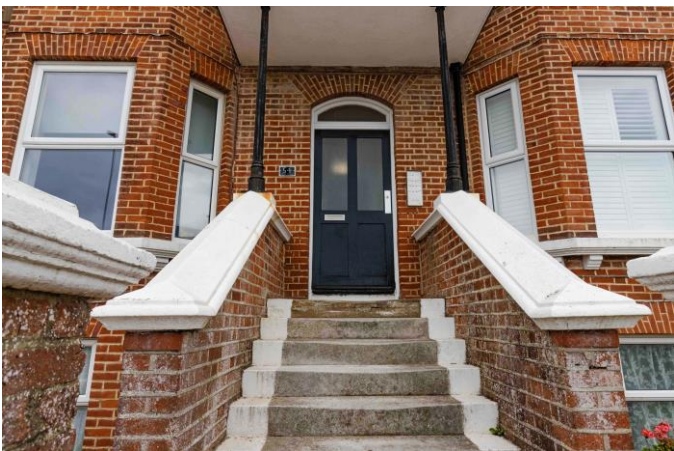
Wood flooring throughout.

W/C

Floor to ceiling tiled walls for splash back. Button flush W/C. Meters cupboard. Floating wash hand basin.

Bedroom 11' 4" x 8' 2" (3.45m x 2.49m)

Double glazed windows to rear. Electric panel radiator. Wood effect floor.



Lounge/Kitchen Diner 17' 10" x 14' 0" (5.43m x 4.26m)

Double glazed windows into bay with direct sea views. The open plan kitchen offers a range of grey high gloss wall and base units. The marble effect work top has a stainless steel sink inset with mixer tap and draining board. Integrated appliances include a fan assisted oven & a four ring electric hob with overhead extractor fan. Grey brick effect tiles for splash back. The lounge has a tv point and an electric radiator and wood effect flooring.



Shower Room 5' 11" x 4' 8" (1.80m x 1.42m)

Floor to ceiling tiled walls. Corner unit shower with sliding door. Pedestal wash hand basin. Plumbing for washing machine. Chrome heated towel rail. Tiled floor.

Tenure

Leasehold. Existing lease term is 125 years.

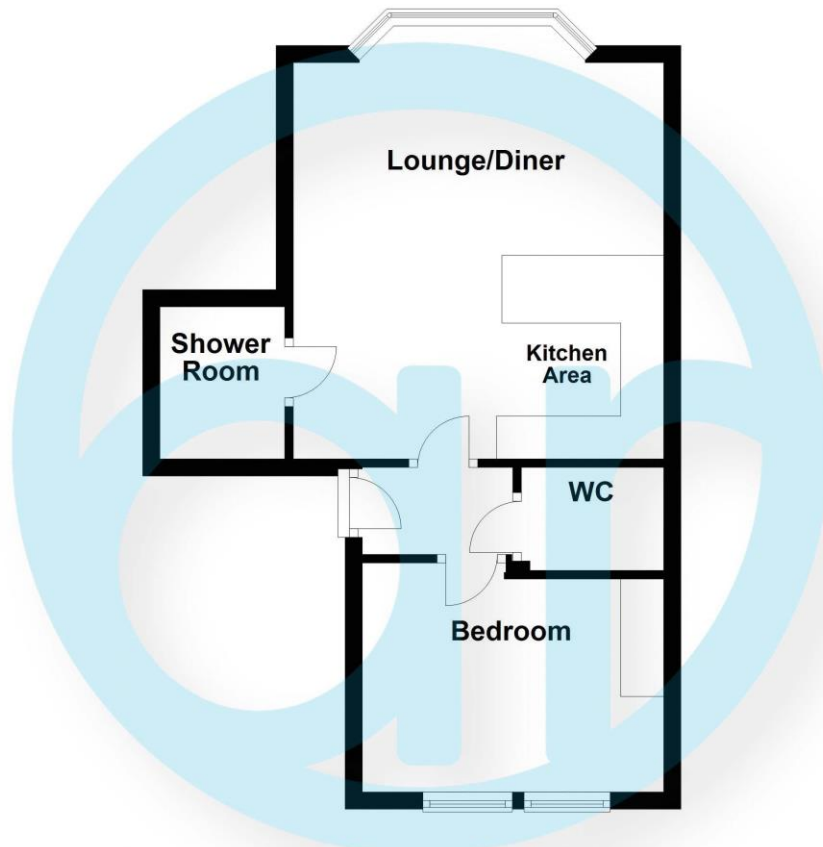
Maintenance

Annual maintenance charge is £1900 which includes ground rent.



Floor Plan

Approx. 36.8 sq. metres (395.6 sq. feet)



Total area: approx. 36.8 sq. metres (395.6 sq. feet)

www.aspireresidential.co.uk

28 Goring Road , Worthing, BN12 4AD
01903 259961 info@aspireresidential.co.uk